
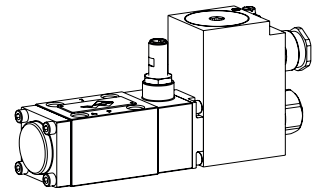


**Solenoid operated poppet valve with inductive switching position monitoring**

- ◆ 2/2- or 3/2-way execution
- ◆  $Q_{max} = 40 \text{ l/min}$
- ◆  $p_{max} = 350 \text{ bar}$

**NG6**  
**ISO 4401-03**
 II 2 G Ex db IIC T6, T4

**DESCRIPTION**

Solenoid operated poppet valve according to data sheet 1.11-3143 with additional inductive switching position monitoring. The contactless sensor transmits the poppet position to a step signal.

**TYPE CODE**

International standard interface ISO	A	EXd	<input type="checkbox"/>	2	06	/	<input type="checkbox"/>	-	<input type="checkbox"/>	Z104	#	<input type="checkbox"/>
Explosion proof execution												
2-Wege (Anschlüsse)				<input type="checkbox"/>								
3-Wege (Anschlüsse)				<input type="checkbox"/>								
2 switching positions												
Nominal size 6												
Normally closed	Solenoid on A-side			<input type="checkbox"/>								
Normally open	Solenoid on B-side			<input type="checkbox"/>								
Other type designation according to type code data sheet 1.11-3143												
Namur / monitoring												
Design index (subject to change)												

1.11-3144

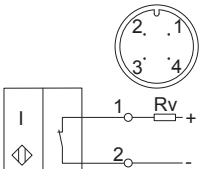
**GENERAL SPECIFICATIONS**

Designation	2/2-, 3/2-way poppet valve
Construction	Direct operated
Mounting	Flange construction
Nominal size	NG6 according to ISO 4401-03
Actuation	Switching solenoid
Ambient temperature	L9: -25...+40 °C L15: -25...+70 °C
Weight	3,30 kg
MTTFd	150 years

**Namur-Sensor Specifications:**

Nominal voltage	8,2 VDC
Operating voltage	7,7...9 VDC
Current consumption damped max.	1 mA
Current consumption undamped min.	4 mA
Admissible series resistor $R_v$	550...1100 Ohm
Switching frequency	1000 Hz
Protection class	IP 68
	According to the connection type, the protection class of the valve can be lower, see data sheet 1.11-3143
Dimensions	M12 x 1
Ambient temperature	-25...70 °C
Fastening torque	15 Nm
Peak pressure	500 bar

**ELECTRICAL CONNECTION**

Namur	Article no. 205.5011
Device receptacle	M12, 4 pole male
Mating connector	M12, 4 pole female
	1 = Supply voltage +
	2 = Signal
	Attention: Do not apply a voltage >9V
	
Mating connector not incl. in delivery	

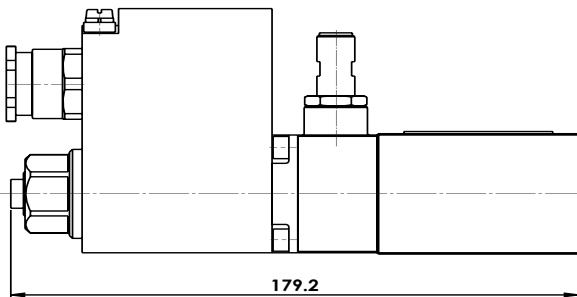
**Signal characteristics**

Signal of the actuator                      Signal of the sensor

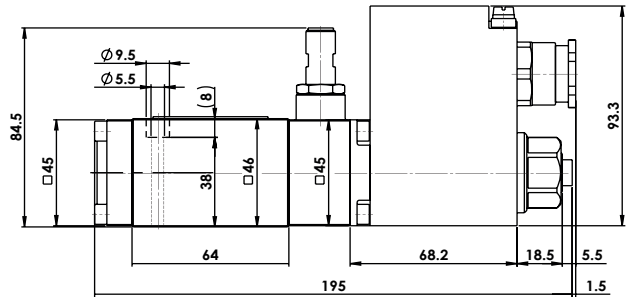
A / B	Namur
0	≥ 4 mA
1	≤ 1 mA

**DIMENSIONS**

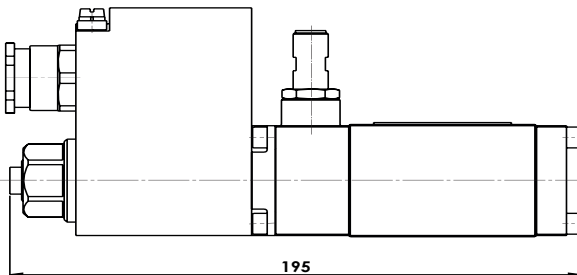
...22061a (solenoid and sensor on A side)



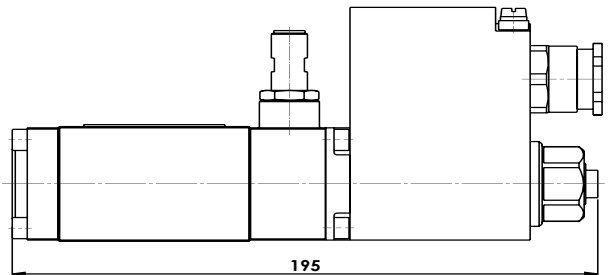
...22060b (solenoid and sensor on B side)



...32061a (solenoid and sensor on A side)



...32060b (solenoid and sensor on B side)


**ACCESSORIES**

Mating connector (plug female, confectionable)

straight, screw terminal                      Article no. 219.2978

angled, screw terminal                      Article no. 219.3003

**SURFACE TREATMENT**

- ◆ The valve body is painted with a two component paint
- ◆ The solenoid coil is zinc-nickel coated
- ◆ All the other parts are zinc coated

**INSTALLATION NOTES**

Mounting type	Flange mounting 4 fixing holes for socket head screws M5 x 45
Mounting position	Any, preferably horizontal
Tightening torque	Fixing screws $M_D = 5,2 \text{ Nm}$ (screw quality 8.8, zinc coated) $M_D = 5 \text{ Nm}$ knurled nut

**Note!**


The length of the fixing screw depends on the base material of the connection element.