

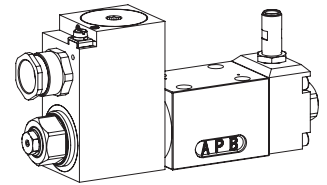
## Solenoid operated spool valve

### Flange construction

- ◆ 4/2-way impulse execution, detented
- ◆ 4/3-way with spring centered mid position
- ◆ 4/2-way with spring reset
- ◆  $Q_{max} = 80$  l/min
- ◆  $p_{max} = 350$  bar

**NG6**  
**ISO 4401-03**

Ex II 2 G Ex db IIC T6, T4



## DESCRIPTION

Spool valve according to data sheet 1.3-34 with additional inductive switching position monitoring. The contactless sensor transmits the spool position to a step signal.

## TYPE CODE

Spool valve, direct operated	WD Y F A06 - <span style="border: 1px solid black; display: inline-block; width: 100px; height: 15px;"></span> - <span style="border: 1px solid black; display: inline-block; width: 30px; height: 15px;"></span> # <span style="border: 1px solid black; display: inline-block; width: 15px; height: 15px;"></span>
Explosion proof execution, Ex d	
Flange construction	
International standard interface ISO NG6	
Other type designation according to type code data sheet 1.3-34	
Namur / Monitoring	single <span style="border: 1px solid black; padding: 2px;">Z104</span> double <span style="border: 1px solid black; padding: 2px;">Z72 / 104</span> (only 4/2-way spool valves)
Design index (subject to change)	

1.3-36

## GENERAL SPECIFICATIONS

Designation	4/2-, 4/3-spool valve
Construction	Direct operated
Mounting	Flange construction
Nominal size	NG6 according to ISO 4401-03
Actuation	Switching solenoid
Ambient temperature	L9: -25...+40 °C L15: -25...+70 °C
Weight	0,5 kg single flange 1,0 kg double flange
MTTFd	150 years

### Namur-Sensor Specifications:

Nominal voltage	8,2 VDC
Operating voltage	7,7...9 VDC
Current consumption damped max.	1 mA
Current consumption undamped min.	4 mA
Admissible series resistor $R_v$	550...1100 Ohm
Switching frequency	1000 Hz
Protection class	IP 68
Dimensions	M12 x 1
Ambient temperature	-25...70 °C
Fastening torque	15 Nm
Peak pressure	500 bar

According to the connection type, the protection class of the valve can be lower, see data sheet 1.2-59

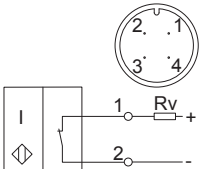
## SURFACE TREATMENT

- ◆ The valve body is painted with a two component paint
- ◆ All the other parts are zinc-nickel coated

## ACCESSORIES

Mating connector (plug female, confectionable)	
straight, screw terminal	Article no. 219.2978
angled, screw terminal	Article no. 219.3003

**ELECTRICAL CONNECTION**

Namur	Article no. 205.5011
Device receptacle	M12, 4 pole male
Mating connector	M12, 4 pole female
	1 = Supply voltage + 2 = Signal
	Attention: Do not apply a voltage >9V
Mating connector not incl. in delivery	

**Signal characteristics**

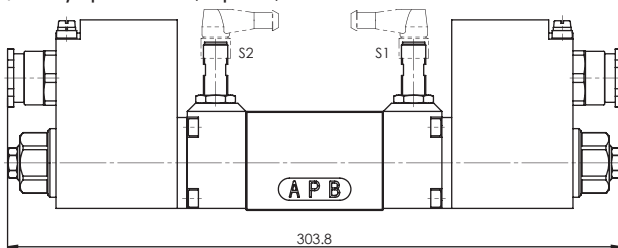
Signal of the actuator                      Signal of the sensor

A / B	Namur
0	≥ 4 mA
1	≤ 1 mA

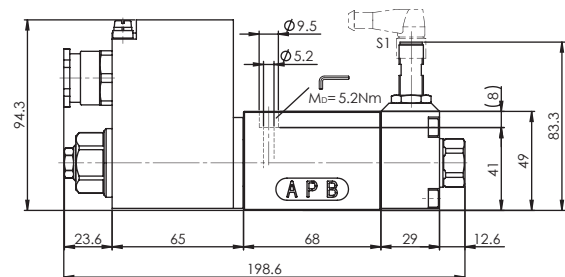
**DIMENSIONS**

4/3-way spool valve (spring centring)

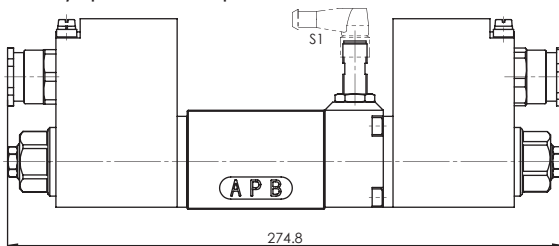
4/2-way spool valve (impulse)



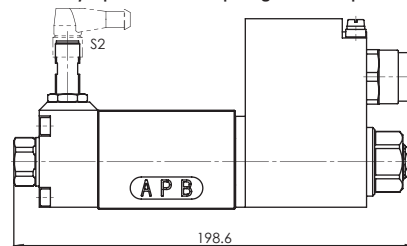
4/2-way spool valve (spring reset) operation A-side



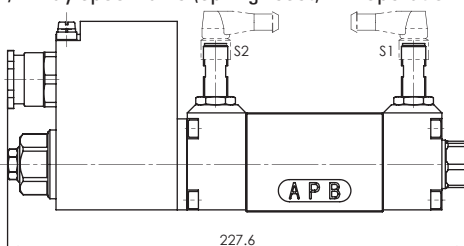
4/2-way spool valve (impulse)



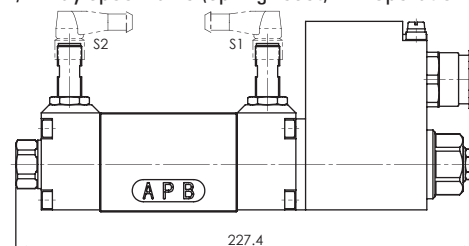
4/2-way spool valve (spring reset) operation B-side



4/2-way spool valve (spring reset) Z72 operation A-side



4/2-way spool valve (spring reset) Z72 operation B-side


**INSTALLATION NOTES**

Mounting type	Flange mounting 4 fixing holes for socket head screws M5 x 50
Mounting position	Any, preferably horizontal
Tightening torque	Fixing screws $M_0 = 5,2 \text{ Nm}$ (screw quality 8.8, zinc coated) $M_0 = 5 \text{ Nm}$ knurled nut

**Note!**


The length of the fixing screw depends on the base material of the connection element.