

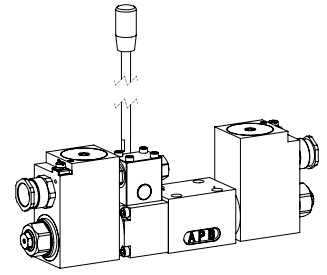
## Solenoid operated spool valve with additional hand lever actuation

### Flange construction

- ◆ 4/3-way with spring centred mid position
- ◆  $Q_{max} = 80 \text{ l/min}$
- ◆  $p_{max} = 350 \text{ bar}$

### NG6 ISO 4401-03

- ⊕ II 2 G Ex db IIC
  - ⊕ II 2 D Ex tD A21 IP65
  - ⊕ I M2 Ex db I Mb
- Class I Division 1  
Class I Zone 1



## DESCRIPTION

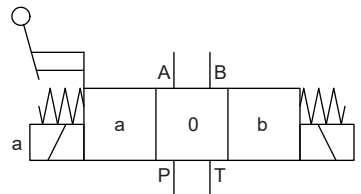
Spool valve according to data sheet 1.3-34 with additional hand lever actuation.

**Note!** The standard valve cannot be retrofitted.



## SYMBOL

Overview spool types see data sheet 1.3-34

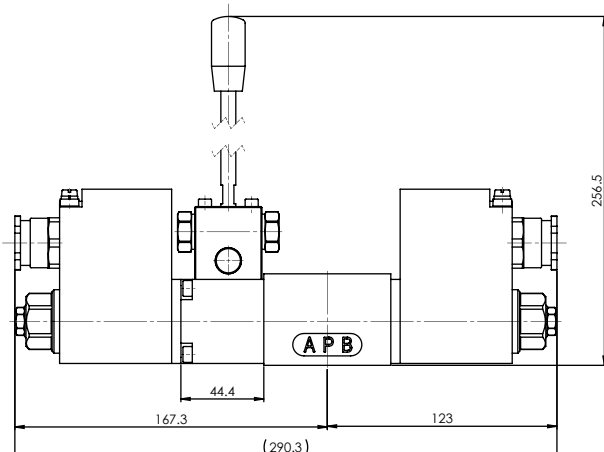


## TYPE CODE

Spool valve, direct operated	WD Y F A06 -	Z568 # 2
Ex-protection execution Ex d		
Flange construction		
International standard interface ISO NG6		
Other type designation according to type code data sheet 1.3-34		
Hand lever		
Design index (subject to change)		

1.3-37

## DIMENSIONS



## GENERAL SPECIFICATIONS

Weight ..... WDYFA06 +1,0 kg

**Note!** Further specifications, see data sheet 1.3-34



## SURFACE TREATMENT

- ◆ The flange, the housing and the lever are zinc-nickel coated