

Scanwill Intensifiers used in Power Packs

The Scanwill Intensifier has been used in the Hydraulic Power Packs for many years. To get high pressure typically a costly separate high pressure system will be installed. A simple and cost effective alternative is to install a Scanwill Pressure Intensifier, which can easily be fitted on to any low pressure power pack. The Scanwill Intensifier has pressure ratios ranging from 1.5 to 16. Using the intensifier, you will get the speed and flexibility of the standard hydraulic power unit with the high pressure capabilities.

Some examples of Power Packs using Scanwill Intensifiers:

Gear pump with intensifier

Output pressure: up to 2,500 bar



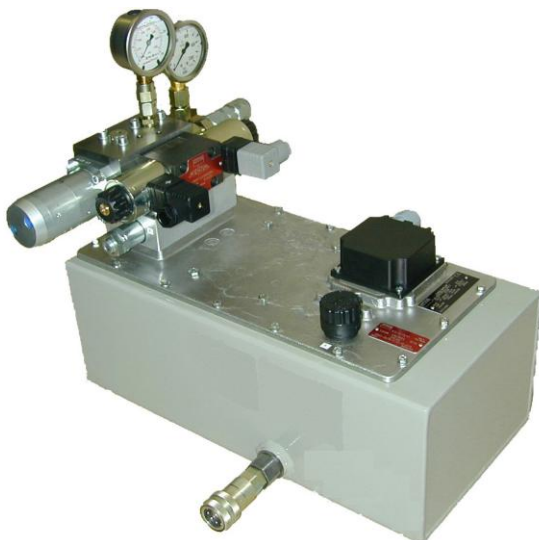
Piston pump with intensifier

Output pressure up to 1,600 bar



Gear pump with intensifier

Output pressure: up to 700 bar



Piston pump with intensifier

Output pressure up to 800 bar

