

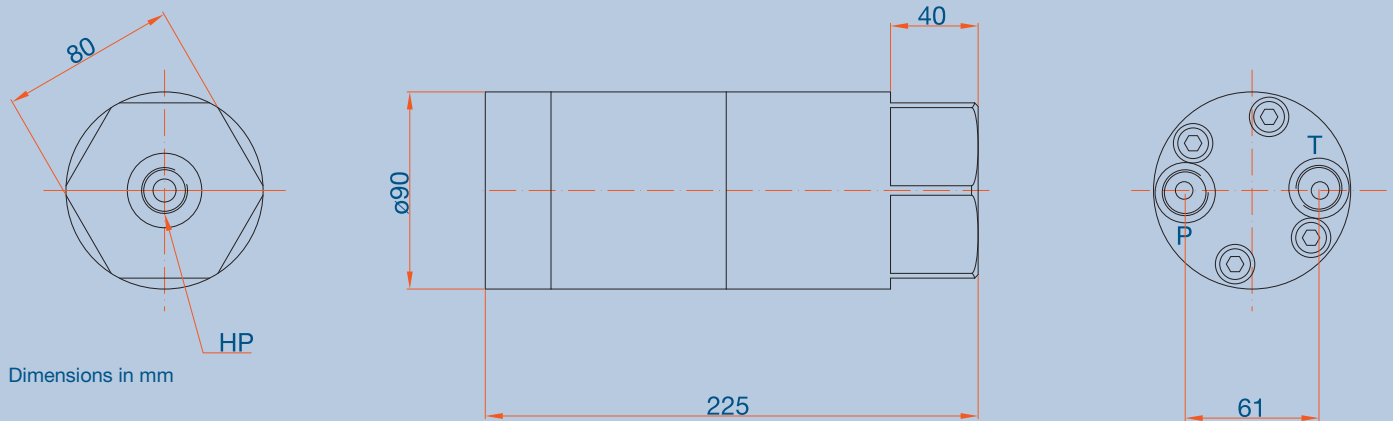


- In-Line Pressure Intensifier
- End pressure up to 800 bar / 11,600 psi
- Multiple intensification ratios available
- Reciprocating - delivers continuous flow during pressure build up
- All high pressure valves are integrated including a p.o. check valve

# The MP-L Pressure Intensifier

Ratio (i)	Max. Inlet flow (LPM / GPM)	Outlet Flow Q1 (LPM / GPM)	Outlet Flow Q2 (LPM / GPM)	Max. Supply Pressure (bar / psi)	Max. Output Pressure (bar / psi)
2.0	50.0 / 13.22	5.0 / 1.32	2.0 / 0.52	200 / 2,900	400 / 5,800
3.4	80.0 / 21.16	17.8 / 4.71	13.0 / 3.44	200 / 2,900	680 / 9,860
4.0	80.0 / 21.16	14.7 / 3.89	11.0 / 2.91	200 / 2,900	800 / 11,600
5.0	80.0 / 21.16	11.6 / 3.06	8.0 / 2.33	160 / 2,320	800 / 11,600
7.0	80.0 / 21.16	8.4 / 2.22	6.3 / 1.67	114 / 1,653	800 / 11,600

Weight : 9.0 kg



Connections: G1/2" (1/2"BSP)

Ordering code

Intensification				
2.0	3.4	4.0	5.0	7.0

Example

MP-L with intensification 4.0: MP-L-4.0

