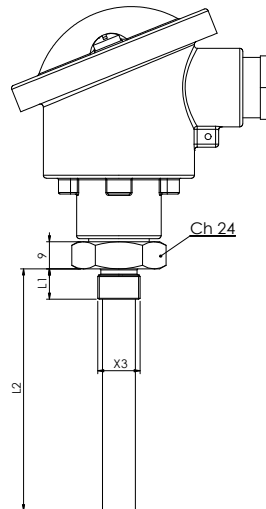
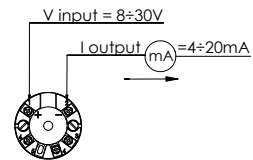
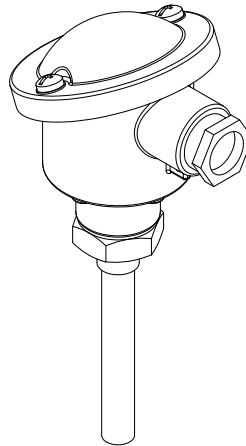
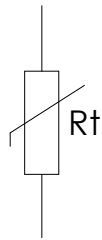
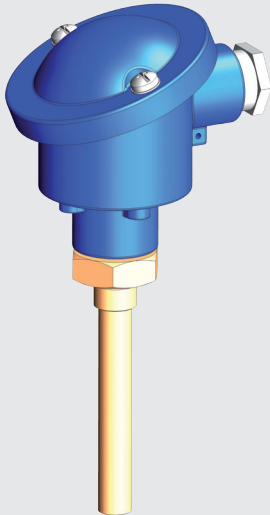


598

Sonde di temperatura con uscita analogica 4-20 mA
Temperature probes with 4-20 mA analogic output



Segnale di uscita	analogico 4-20 mA
Tensione di alimentazione	8-30V
Materiale stelo	ottone (a richiesta acciaio inox)
Temperature di lavoro	-20 / + 100° C
Filettature (X3)	L1 - L2 (a richiesta)
Grado di protezione	IP65
Connessione elettrica	DIN B in alluminio

Output signal	analogic 4-20mA
Supply voltage	8-30V
Stem material	brass (stainless steel on request)
Working temperature	-20 / +100° C
Thread (X3)	L1 - L2 (on request)
Protection degree	IP65
Electrical connection	DIN B in aluminum

Per un corretto impiego vedere le note generali del catalogo "Sensori di Temperatura" Euroswitch edizione 2013.
For a correct use please refer to "General Notes" in the "Temperature sensors" Euroswitch catalogue, edition 2013.