

EHV Series 330 bar, 10 to 57 Litres

Standard version (Carbon Steel shell/NBR mix) compatible with mineral oils (2).
According to PED 2014/68/EU, EN 14359, Fluid Group 2 (3).

Product Prices, Part numbers, Accessories

| Type Part number | Valve | Adaptor* | Clamps | Support Bracket | Mounting Frame | Lifting Eye on gas side | Complete Repair Kit |
|--|----------------|-------------------------|------------------------------------|----------------------|----------------------|----------------------------|--|
| | see drawing | Threaded Part number | Model (quantity) Part number | Model Part number | Model Part number | Model Part number | Model Part number |
| EHV 10-330/90-A25GA-200 10837001125 | A | G 1" cyl | D226 (2) | CE159A | EF2 | | KIT EHV 10-330/90-A25GA 19028900225 |
| EHV 10-330/90-A25GB-200 10865401125 | B | 04557000223 | 20251503648 | 20109003620 | 20217600125 | 10912700200 | KIT EHV 10-330/90-A25GB 19035800225 |
| EHV 12-330/90-A25GA-200 10867101125 | A | G 1" cyl | D226 (2) | CE159A | EF2 | | KIT EHV 12-330/90-A25GA 19032100225 |
| EHV 12-330/90-A25GB-200 10867401125 | B | 04557000223 | 20251503648 | 20109003620 | 20217600125 | 10912700200 | KIT EHV 12-330/90-A25GB 19035900225 |
| EHV 20-330/90-A25GA-200 10837101125 | A | G 1" cyl | D226 (2) | CE159A | EF2 | | KIT EHV 20-330/90-A25GA 19029000225 |
| EHV 20-330/90-A25GB-200 10865501125 | B | 04557000223 | 20251503648 | 20109003620 | 20217600125 | 10912700200 | KIT EHV 20-330/90-A25GB 19036000225 |
| EHV 24.5-330/90-A25GA-200 10837201125 | A | G 1" cyl | D226 (2) | CE159A | EF2 | | KIT EHV 24.5-330/90-A25GA 19029400225 |
| EHV 24.5-330/90-A25GB-200 10865601125 | B | 04557000223 | 20251503648 | 20109003620 | 20217600125 | 10912700200 | KIT EHV 24.5-330/90-A25GB 19036300225 |
| EHV 32-330/90-A25GA-200 10837301125 | A | G 1" cyl | D226 (2) | CE159A | EF3 | | KIT EHV 32-330/90-A25GA 19029100225 |
| EHV 32-330/90-A25GB-200 10865701125 | B | 04557000223 | 20251503648 | 20109003620 | 20217700125 | 10912700200 | KIT EHV 32-330/90-A25GB 19036100225 |
| EHV 42-330/90-A25GA-200 11112301125 | A | G 1" cyl | D226 (2) | CE159A | EF3 | | KIT EHV 42-330/90-A25GA 19060800225 |
| EHV 42-330/90-A25GB-200 11123601125 | B | 04557000223 | 20251503648 | 20109003620 | 20217700125 | 10912700200 | KIT EHV 42-330/90-A25GB 19061100225 |
| EHV 50-330/90-A25GA-200 11076701125 | A | G 1" cyl | D226 (2) | CE159A | EF3 | | KIT EHV 50-330/90-A25GA 19054100225 |
| EHV 50-330/90-A25GB-200 11076801125 | B | 04557000223 | 20251503648 | 20109003620 | 20217700125 | 10912700200 | KIT EHV 50-330/90-A25GB 19054200225 |
| EHV 57-330/90-A25GA-200 11112401125 | A | G 1" cyl | D226 (2) | CE159A | EF3 | | KIT EHV 57-330/90-A25GA 19060900225 |
| EHV 57-330/90-A25GB-200 11123801125 | B | 04557000223 | 20251503648 | 20109003620 | 20217700125 | 10912700200 | KIT EHV 57-330/90-A25GB 19061200225 |

(2) For other fluids consult Parker

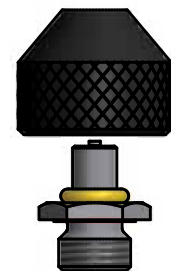
(3) For Fluid group 1 consideration : consult Parker

*For more adaptor options see pages 74 & 75

Model of valve stem
5/8" 18 UNF
(A)



Model of valve stem
7/8" 14 UNF
(B)



| Type | Effective Gas vol. Litres | Max. Working pressure (PS) bar | Max Flow Rate l/min | Admissible Accumulator Temperature min/max (°C) (1) | Weight kg | Gas connection | Dimensions in mm | | | | | | | |
|-----------------------|---------------------------|--------------------------------|---------------------|---|-----------|----------------|------------------|-----|----|-----|------|-----|------------|--------------|
| | | | | | | | A max Height | B | C | øD | ød | øE | F on flats | G connection |
| EHV 10-330/90-A25GA | 9.2 | 330 | 900 | -20/+80 | 31 | 5/8" 18 UNF | 587 | 103 | 66 | 226 | 22.5 | 101 | 70 | G2" |
| EHV 10-330/90-A25GB | | | | | | 7/8" 14 UNF | | | | | | | | |
| EHV 12-330/90-A25GA | 11 | 330 | 900 | -20/+80 | 36 | 5/8" 18 UNF | 687 | 103 | 66 | 226 | 22.5 | 101 | 70 | G2" |
| EHV 12-330/90-A25GB | | | | | | 7/8" 14 UNF | | | | | | | | |
| EHV 20-330/90-A25GA | 17.8 | 330 | 900 | -20/+80 | 49 | 5/8" 18 UNF | 897 | 103 | 66 | 226 | 22.5 | 101 | 70 | G2" |
| EHV 20-330/90-A25GB | | | | | | 7/8" 14 UNF | | | | | | | | |
| EHV 24.5-330/90-A25GA | 22.5 | 330 | 900 | -20/+80 | 56 | 5/8" 18 UNF | 1032 | 103 | 66 | 226 | 22.5 | 101 | 70 | G2" |
| EHV 24.5-330/90-A25GB | | | | | | 7/8" 14 UNF | | | | | | | | |
| EHV 32-330/90-A25GA | 32 | 330 | 900 | -20/+80 | 81 | 5/8" 18 UNF | 1420 | 103 | 66 | 226 | 22.5 | 101 | 70 | G2" |
| EHV 32-330/90-A25GB | | | | | | 7/8" 14 UNF | | | | | | | | |
| EHV 42-330/90-A25GA | 42 | 330 | 900 | -20/+80 | 87 | 5/8" 18 UNF | 1562 | 103 | 66 | 226 | 22.5 | 101 | 70 | G2" |
| EHV 42-330/90-A25GB | | | | | | 7/8" 14 UNF | | | | | | | | |
| EHV 50-330/90-A25GA | 48.5 | 330 | 900 | -20/+80 | 110 | 5/8" 18 UNF | 1936 | 103 | 66 | 226 | 22.5 | 101 | 70 | G2" |
| EHV 50-330/90-A25GB | | | | | | 7/8" 14 UNF | | | | | | | | |
| EHV 57-330/90-A25GA | 51 | 330 | 900 | -20/+80 | 116 | 5/8" 18 UNF | 2032 | 103 | 66 | 226 | 22.5 | 101 | 70 | G2" |
| EHV 57-330/90-A25GB | | | | | | 7/8" 14 UNF | | | | | | | | |

(1) Temperature range can change depending on shell and elastomer material. Please see bladder materials and Type (page 87)

Above dimensions are in mm and are subject to manufacturing tolerances.

